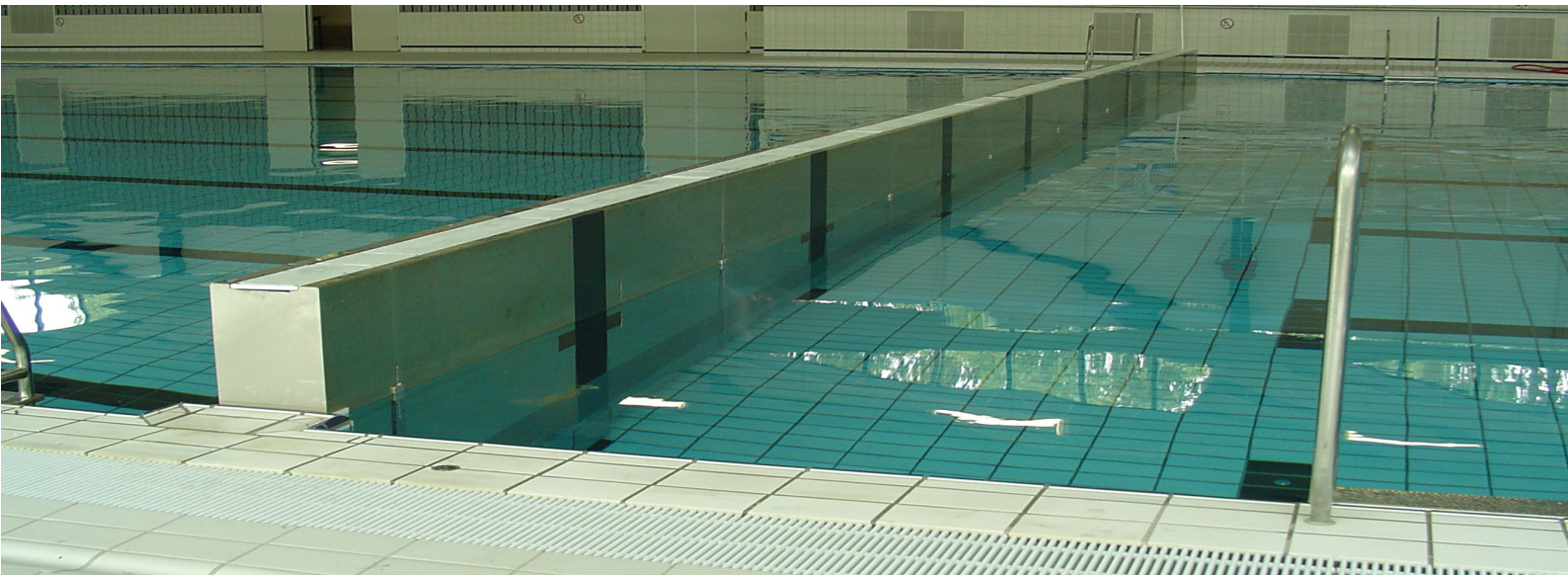


VARIO  **POOL**
THE REAL DEPTH INVESTMENT



PRODUCT INFORMATION
HINGED BULKHEAD

PRODUCT INFORMATION

HINGED BULKHEAD



PRODUCT DESCRIPTION

The Variopool hinged bulkhead is designed to maximise the flexibility of a standard swimming pool by dividing it into two separate individual areas. When not in use the hinged bulkhead rests completely level with the pool floor allowing for complete use of the pool for activities such as lane swimming, water polo and galas. Once raised the wall acts as a safe partition between two or more areas in which separate activities can take place. The hinged bulkhead can be supplied in a single piece or in multiple sections working independently. The system is operated by means of a control panel located pool side which activates hydraulic cylinder(s) located in a basement plant room.

The structure consists of a sturdy 316L stainless steel frame designed to take all forces associated with swimmers starting from and turning on the wall as well as standard lane ropes. The exterior finish of the bulkhead is made of vertically placed polypropylene or polyester panels mounted on to the steel frame. The panels are slotted so as not to interfere with proper circulation of the water.

Variopool hinged bulkheads are suitable for professional competitive use and are fully compliant with local Health and Safety requirements. Each section is custom made to perfectly fit and operate inside the pool in order to create the safest possible swimming environment for all user groups. The hinged wall is secured by the hydraulic cylinders in its vertical and horizontal positions.

TECHNICAL SPECIFICATIONS

Material - frame	Stainless Steel 316L frame construction (pickled and passivated)
Material - finish	Polypropylene panels 20 mm thick with integrated perforation
Colour - finish	Standard white (RAL 9010)
Maximum height	100 - 300 mm above waterline
Actuating system	Hydraulic cylinder(s) with pump unit
Width variations	Min. 300 mm to max. 1250 mm
Loadings	50 - 200 kg/m ²

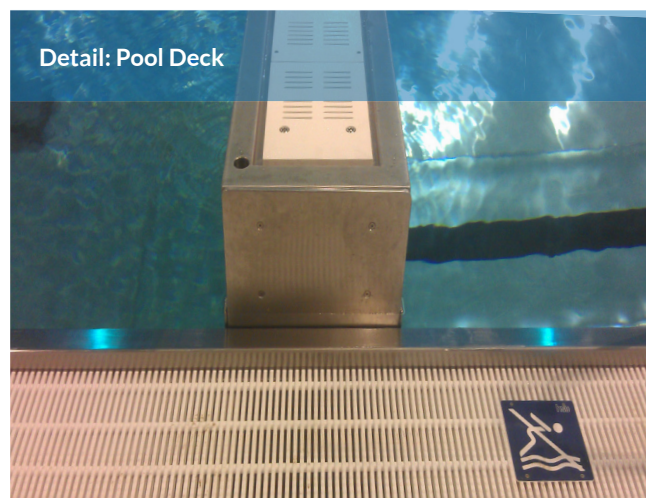
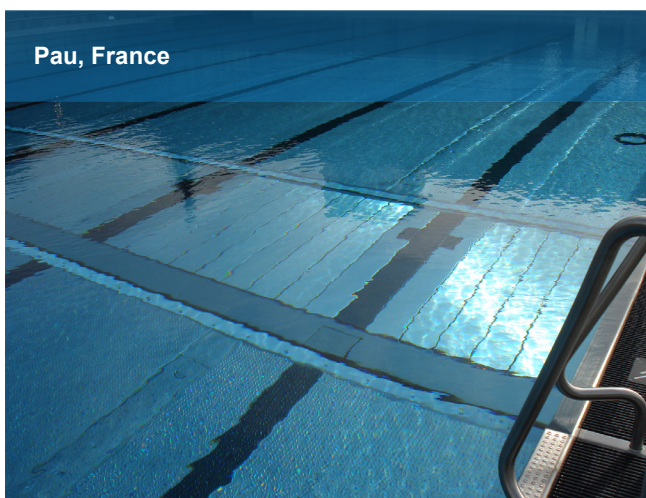
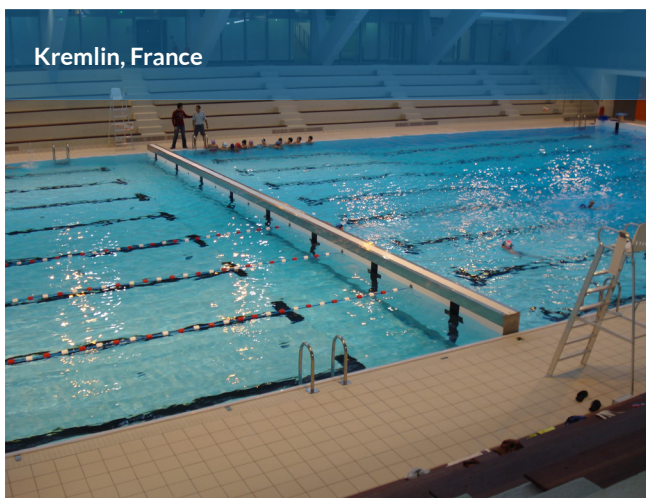
CONVENIENCE AND SAFETY FEATURES

The hinged bulkhead has a standard base model which can be equipped with additional convenient features:

- | | |
|----------|--|
| Standard | • Lockable control panel with push buttons and emergency button |
| Standard | • Internet connection cat. 6 for remote service access |
| Standard | • Warning light and sounder |
| Standard | • Anchors for competition lane ropes |
| Standard | • Finger grips on the edge on both sides |
| Standard | • Racing Lines in colours blue RAL 5013 or black 9005 (other colours upon request) |
| Optional | • Removable mirror-polished hand rails |
| Optional | • Connections for touch pads / timing equipment (for example: Omega) |
| Optional | • Removable platform to increase walking surface |

REFERENCES

Below are some references where Variopool has installed a hinged bulkhead. Do you have questions about these or other references, please contact us. You can reach us every working day by calling +31 226 333 000 or by sending an email to info@variopool.nl.



MORE INFORMATION

Variopool B.V. - Haarspit 3 - 1724 BG Oudkarspel - The Netherlands
Tel. +31 226 333 000 - Fax +31 226 333 099 - E-mail: info@variopool.nl - Web: www.variopool.nl