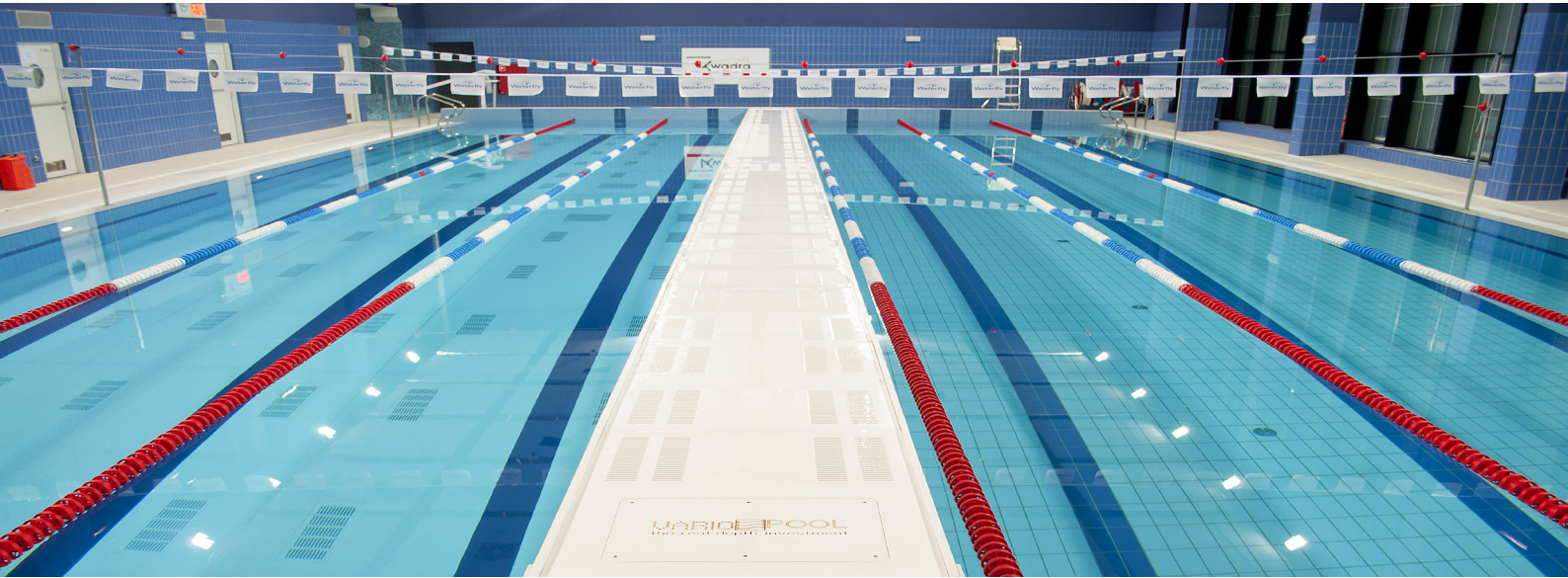


VARIO POOL

THE REAL DEPTH INVESTMENT



PRODUCT INFORMATION
SUBMERSIBLE BULKHEAD

PRODUCT INFORMATION

SUBMERSIBLE BULKHEAD



PRODUCT DESCRIPTION

A Variopool submersible or vertical bulkhead is designed to split a standard swimming pool into more than one individual spaces. The bulkhead facilitates a rapid transformation to the pool creating independent water areas to host different activities for different groups. In its lowest position the submersible bulkhead disappears completely into a recessed niche located in the bottom of the pool tank creating a completely even pool floor. The system is easily operated from pool side using a custom programmed control panel.

Once up in position, the locked bulkhead creates a solid partition closing off the area from the pool base to above water level so various activities can take place simultaneously. The bulkhead face panels are slotted so that it does not interfere with the proper circulation of the water.

The standard submersible bulkhead is based on a buoyant system which can be raised or lowered with the aid of a hydraulic cylinder pulling on stainless steel cables. The steel cables attached to the bulkhead frame are directly connected to the cylinder by way of a self-lubricating pulley system eliminating any chance of contamination to the pool water. This buoyant system is a proven concept characterized by its simplicity and a minimum of moving parts resulting in a high level of reliability and lower maintenance costs.

Variopool submersible bulkheads are suitable for professional use and are fully compliant with the minimum requirements set by the FINA as well as European Norm EN13451-11.

TECHNICAL SPECIFICATIONS

Material - construction	Pickled and passivated Stainless Steel 316L frame construction
Material - finish	Slotted 20 mm thick Polypropylene panels with a non-slip surface
Colour	White (RAL 9010)
Buoyancy	Max. 200 kg/m ²
Material - cables	Dual Stainless Steel 316L twisted cables (individually certified)
Guide channels	Two (2) Stainless Steel channels incorporated into the pool walls
Actuating system	Hydraulic cylinder(s)
Speed	250 – 330 mm/min.
Controls	PLC technology with programmable software

CONVENIENCE AND SAFETY FEATURES

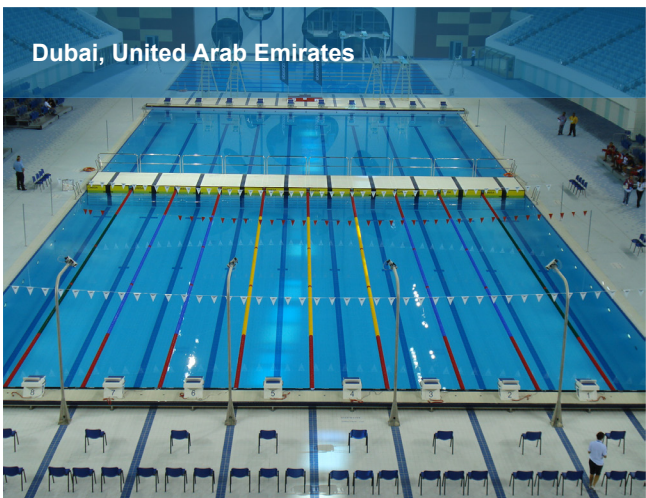
The submersible bulkhead has a standard base model which can be equipped with additional convenience features:

- Standard • Lockable control panel with custom Touch Screen and emergency button
- Standard • Internet connection cat. 6 for immediate remote maintenance access
- Standard • Warning light and sounder
- Standard • Finger grips on top edge and integrated anchors for swimming lane ropes
- Standard • Two access hatches for maintenance
- Standard • Competition racing lines in colours blue (RAL5013) or black (RAL9005)
- Optional • Integrated connections for competition timing equipment (Omega et al.)
- Optional • Foundations for starter blocks and/or integrated foot ledge
- Optional • Removable mirror-polished hand rails
- Optioneel • Geïntegreerde fundaties voor startblokken en/of sta rand

REFERENTIES

Below is a short list of references where Variopool has designed and installed a submersible bulkhead. Feel free to contact us should you have questions about these or any other Variopool product by calling +31 226 333 000 or email via info@variopool.nl.

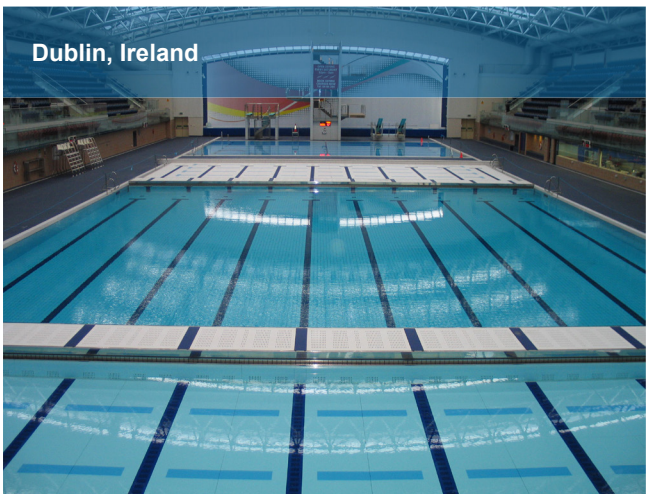
Dubai, United Arab Emirates



Sheffield, England



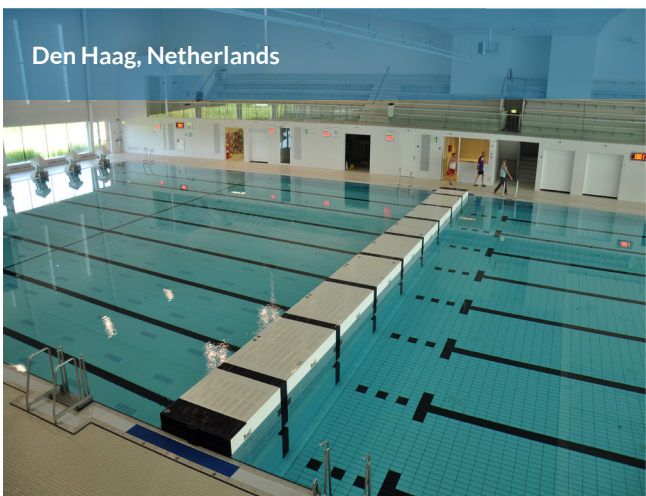
Dublin, Ireland



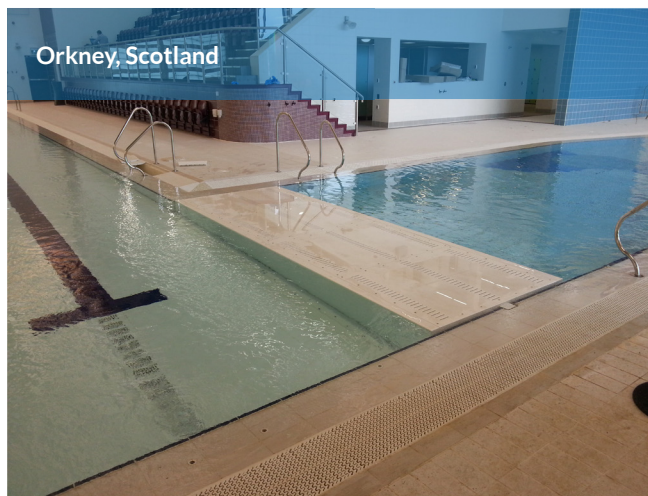
Plymouth, England



Den Haag, Netherlands



Orkney, Scotland



MORE INFORMATION

Variopool B.V. - Haarspit 3 - 1724 BG Oudkarspel - Netherlands
Tel. +31 226 333 000 - Fax +31 226 333 099 - E-mail: info@variopool.nl - Web: www.variopool.nl